

FLOS

03.4227.B1 White

Kap 80 Square Fixed

Designed by FLOS Architectural, 2016



Recessed luminaire with main voltage source.

Are you a professional and your project needs consulting and support?

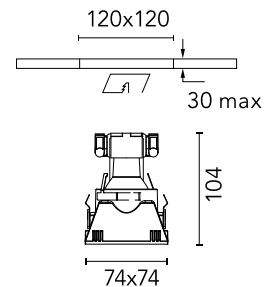
[BOOK AN APPOINTMENT](#)

Main specifications

Mounting	Ceiling recessed
Environments	Indoor dry location
Light Source Type	Bulb
Lamp category	LED retrofit
Lamp type	PAR16
Lamp holders	GU10
Ilcos	No
Number of heads	1
System power (W)	50

Physical

Colour	White
Trim	No
Orientation	Fixed
Recessed depth (mm)	155
Net weight (kg)	0.12
IP internal	20
IP external	23



Download

[Mounting instructions](#)



Ecodesign and Energy Labelling



Replaceable (LED only) light source by an end-user



Photometric

Lighting type	Direct
Light distribution	Symmetric

Electrical

Insulation class	II
Frequency (Hz)	50/60
Main voltage (Vac)	230
Forward voltage (V)	230
LED current (mA)	-9
Emergency type	No

Notes

Not suitable for lens accessories.

Accessories & Power Supply

Max. ø150



ø120



REQUIRED
Frame

Installation

08.9103.00

Installation frame No Trim



REQUIRED
Power supply

Electrical

60.9424

12V Electronic Transformer 35-105W



REQUIRED
Power supply

Electrical

60.9398

12V Electronic Transformer 20-70W