

# Flat

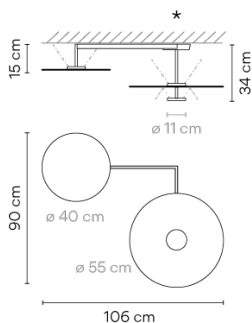
VIBIA

5910

Design By Ichiro Iwasaki

Flat is a ceiling lamp composed of three horizontal discs at various heights that create planes of reflected light. The discs are self-illuminated by reflected light. The Flat ceiling light has a strong graphic quality, combining structure and functionality.

## Model Sheet



**Finish**

- 72 White, Green L1  
NCS S 0300-N, NCS S 4005-G80Y
- 10 White  
test ral
- 73 Grey L1  
test ral

**LED temperature color** 2700 K / 3500 K / 4000 K

**Dimming** DALI 1-10V Push

**Installation type** Surface Canopy

**Materials**

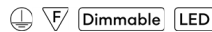
- Ceiling rose: Steel
- Reflector: Aluminum
- Body: Steel
- Head: Aluminium

**Light source** 3 x LED PLATE 13,5W 700mA



**LED** CRI>90 5220 lm 128.88  
2700 K / 3500 K / 4000 K

**Driver** Constant Current 700  
220~240 V V 50~60 Hz HZ



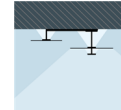
**Application** Ceiling Lamps

**Packaging** 1 Box  
0.727 m x 0.727 m x 0.32 m  
Gross weight 10.6  
Net weight 9.1  
Vol. 0.1691

### Lighting effect

#### General Lighting

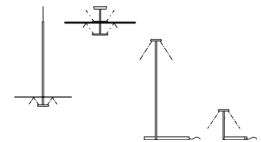
Lamp that emits an upward or backward beam that is reflected by the ceiling or wall.



### Photometric Data

**Efficiency** 66.71 lm/W  
**Coordinate System** CG  
**Total Flux** 2875.20 lm  
**Maximum Value** 661.18 cd

### Other Applications



All of our products come with a five-year warranty. Check our legal terms at [www.vibia.com/warranty](http://www.vibia.com/warranty)

Vibia Lighting, S.L.U.

Office / Oficina  
Progrés 4-6. 08850 Gavà. Barcelona, Spain.

International T +34 934 796 971  
Spain / Portugal T +34 934 796 970

customer.service@vibia.com  
vibia.com