

# FLAT

Design by Ichiro Iwasaki.

## Reference

**5924.**

## Application

Ceiling Lamps

## Installation type

Surface

## Description

Flat is a large ceiling lamp made up of horizontal discs at various heights that create planes of reflected light. The discs are self-illuminated by reflected light. The Flat ceiling light has a strong graphic quality, combining structure and functionality.

## Diffuser

Polycarbonate diffuser

## Materials

Ceiling rose: Steel  
Reflector: Aluminum  
Body: Steel  
Head: Aluminium

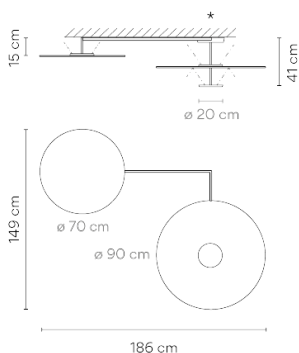
## Finish

**5924-10** White (NCS S 0300-N)

**5924-72** White, Green L1 (NCS S 0300-N, NCS S 4005-G80Y)

**5924-73** White, Grey L1 (NCS S 0300-N, NCS S 1000-N)

## Sketch



## Electrical characteristics

3 x LED PLATE 25W 700mA

Total 75.0 W



# VIBIA



**Light source:** 2700K CRI >90 10440 lm 139 lm/W

**Driver included:** CC - Constant Current 700 mA 110-240V 50/60Hz

**Electronic dimming** DALI 1-10V Push

[ficha.fichatecnicaproducto.regulacion.opcional](#) Casambi

## Physical characteristics

0 Box / 0.00 x 0.00 x 0.00 m. / Vol. 0.0000 m<sup>3</sup> /  
Gross weight 0.0 kg. / Net weight 0.0 kg.

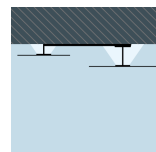
## Installation and assembly

Please, see the installation manual

## Light distribution

### Indirect lighting

Lamp that emits an upward or backward beam that is reflected by the ceiling or wall.



## Photometric data

## Certificates

