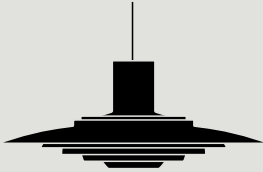


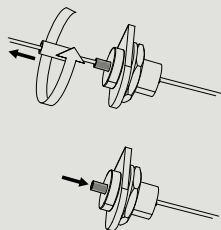
Instructions



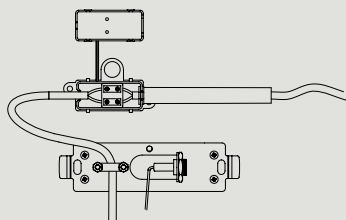
P376 KF2 Kastholm & Fabricius 1963

Congratulations with your new P376 lamp, designed in 1963 by Kastholm & Fabricius. We hope you will enjoy using this lamp and follow these instructions to ensure correct installation. If you have any questions or comments, please do not hesitate to contact us by mail on:

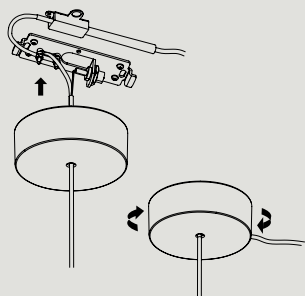
info@andtradition.com

**Step 4**

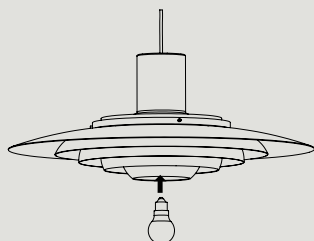
The steel wire can be moved backwards again by unscrewing the metal fitting and pressing in the threading on the fastener.

**Step 5**

Use the terminal block inside the connection box to assemble the wires from the pendant with the wires from the power supply. Close the connection box and place it inside the canopy.

**Step 6**

Place the canopy cup onto the metal bracket and twist to secure it in the right position.

**Step 7**

Install the light bulb.

&Tradition®