

COSTA SUSPENDED FLOOR

15-May-2019

1.0

LED 2xLED channels 1.5W | 120lm | press dim | temperature change from 2200-4000K
rechargeable li-ion battery incl. charger | light for 8 hours | recharging time 5 hours

CE IP65

	suspended floor 1.0 - yellow handle	865186YE9
	suspended floor 1.0 - orange handle	865186OR9
	suspended floor 1.0 - blue handle	865186SB9
	suspended floor 1.0 - black handle	8651860B9

OPTIONAL

DRESS_1.0 Rope		
	brown natural	90057171
	black	90057170

2.0

LED 2xLED channels 1.5W | 120lm | press dim | temperature change from 2200-4000K
rechargeable li-ion battery incl. charger | light for 8 hours | recharging time 5 hours

CE IP65

	suspended floor 2.0 - yellow handle	865286YE9
	suspended floor 2.0 - orange handle	865286OR9
	suspended floor 2.0 - blue handle	865286SB9
	suspended floor 2.0 - black handle	8652860B9

OPTIONAL

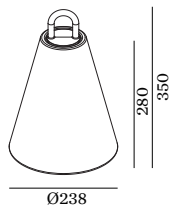
DRESS_2.0 Rope		
	yellow	90057192
	orange	90057191
	blue	90057193
	black	90057190

DRESS_2.1 Cage		
	yellow	90057182
	orange	90057181
	blue	90057183
	black	90057180

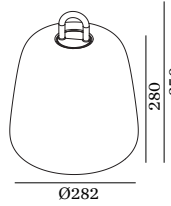
OPTIONAL

FLOOR STANDING_1.0 Pole		
	black	90056001

DIMENSIONS

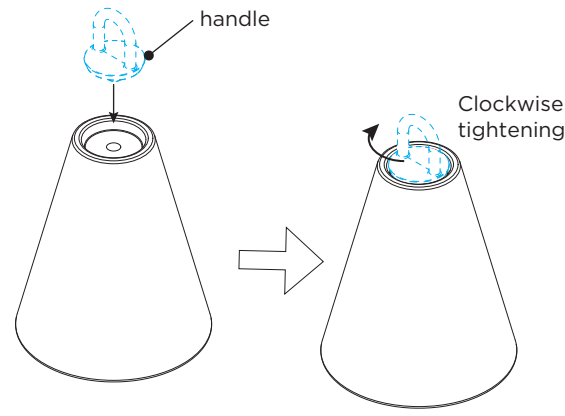


SUSPENDED
FLOOR 1.0

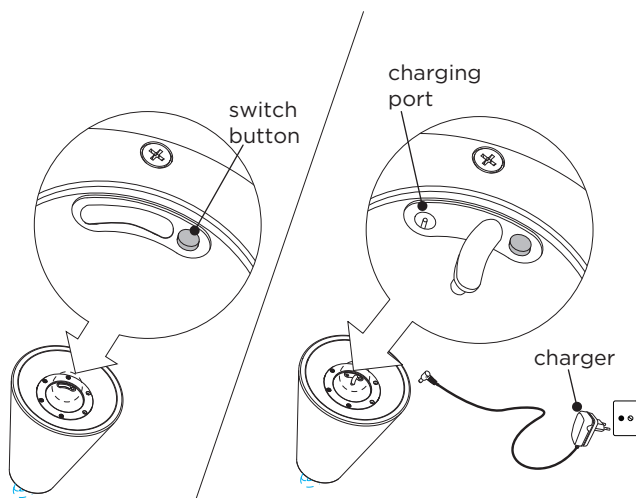


SUSPENDED
FLOOR 2.0

Mounting handle



Location of Switch button & Charging port



IMPORTANT SAFETY INSTRUCTIONS:

- The luminaire is powered by a built-in 3.7V, 4000mA lithium battery, maximum charge current DC 5 V, 800 mA;
- The Lithium Battery is already installed in the fixture, Do not expose the luminaire to fire or to any other heat source, Do not disassemble the battery;
- Please use the charger supplied by the manufacturer, Do not use any other chargers than the charger supplied by the manufacturer;
- The light source of this luminaire is **replaceable**;
- It takes about 5 hours for the luminaire to be fully charged.
- The luminaire can work continuously for 8 hours after a fully charging.
- When the battery is running empty the luminaire will shut down automatically.
- During the charging process, the luminaire can be used.
- Charge at least once every three months to maintain battery performance.
- Do not pull out the connector while the battery is charging. This might damage the battery or reduce the lifetime of the battery

the Indicator Lights

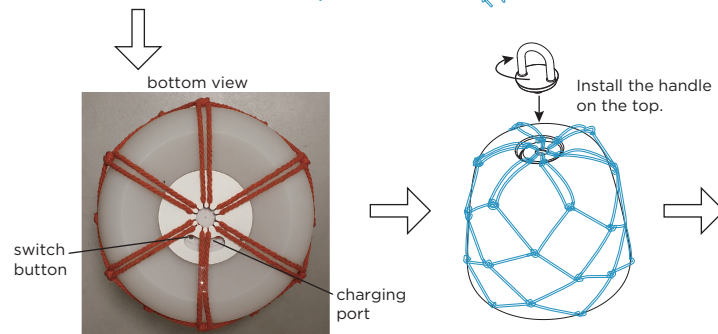
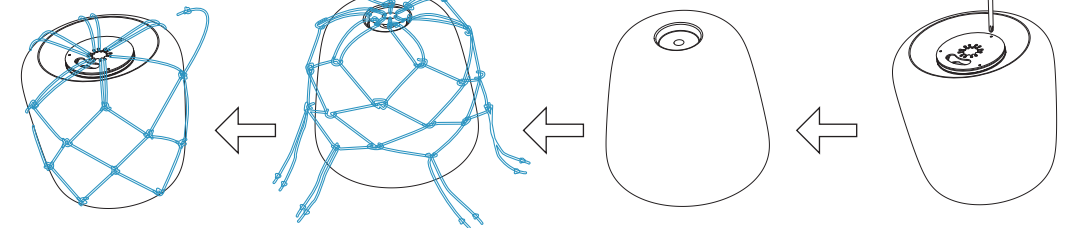
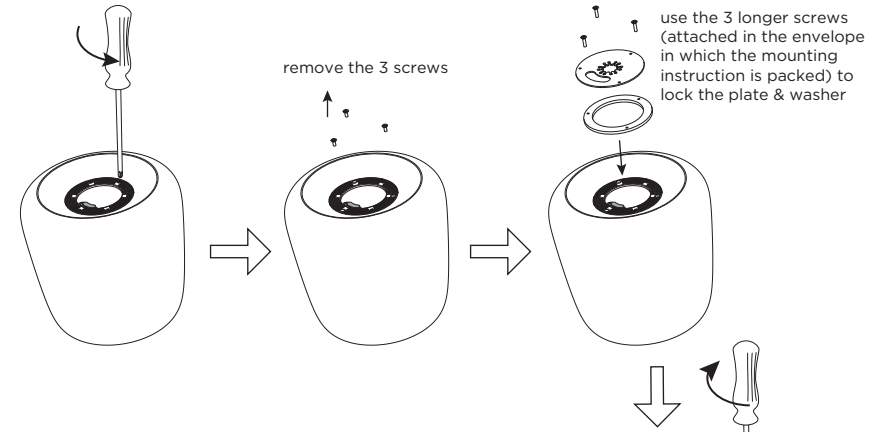
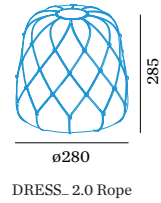
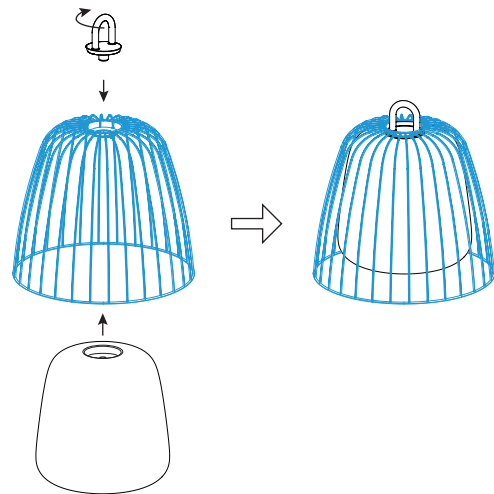
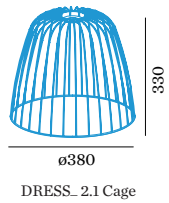
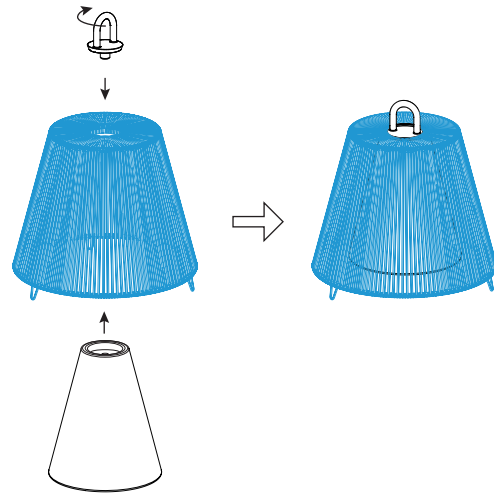
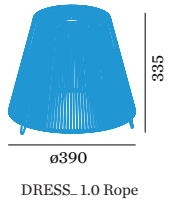
- When the luminaire is charging the red LED indicator is on.
- When the luminaire is fully charged the red LED indicator will be out and the green LED indicator goes on.

Switch on/off and Dimming

- There is a **switch button** at the bottom of the lamp. Press the button to turn on the light and press again to turn off the light.
- The user can adjust the color temperature (the range is from 2200K to 4000k). After holding down the button, the color temperature begins to change gradually. In case of first use, the color temperature changes from low to high, when the color temperature changes from 2200K to the highest 4000K, the change will stop, the transition time is about 5 seconds.
- At this time, the button is released and the color temperature remains at 4000K.
- If the user needs to adjust the color temperature again, repeat the previous method process, this time the change of color temperature will be from high to low, when the color temperature changes to the lowest 2200K, the change will stop.

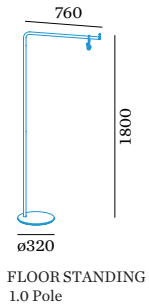
COSTA ACCESSORIES

15-May-2019



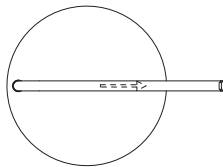
COSTA ACCESSORIES

15-May-2019



- ① Mount the the Pipe 1 on the Pipe 2 by rotating.
- ② Prepare the Washers set and the Screw according the diagram. (Attention on the location order)
- ③ Tighten the screw in order to reach with the pipe. (Before tighten the bracket of the pipe, it must be aligned with the arrow sticker that placed on the base.)

Top view:



- ④ The arrow sticker can be removed.



Be careful not to lift the bracket from the top, hold the lower pipe to lift it.

