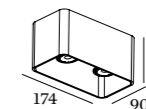
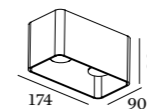
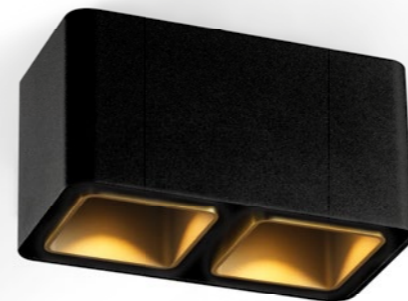




VISUALISATION

DOCUS

CEILING SURFACE



2.0 LED

2xLED 8W | 220-240VAC | 50-60Hz
COB 2-step | incl. PS | phase-cut dim
aluminium powder coated
brushed

1.06kg IP20 0.3-1 36°

	CODE
	146464W
	146464L
	146464G
	146464P
	146464B

Light Colour Selection

	LUMEN	CRI	CODE
2700K	2x480	>80	2
3000K	2x480	>80	4
1800-2850K	2x410	>90	9

2.0 PAR16

2xPAR16 max.35W | GU10
220-240VAC | 50-60Hz
aluminium powder coated
brushed

1.01kg IP20 0.9-1

	CODE
	146420W0
	146420L0
	146420G0
	146420P0
	146420B0

OPTIONAL

PAR16 LED GU10 6W
phase-cut dim

	CODE
2700K	901228W2
3000K	901228W4
1800-2850K	901229S9

more lamps and specs on page 471

OPTIONAL

inner cover max. 10 W

	CODE
	911021W1
	911021G1
	911021B1

